



E800 & E2000 Golf Ball Washer Installation and Operation

www.rangeball.co.uk

Installation

- The machine should be positioned on a **flat and hard** surface, and then **adjusted to level** with the four adjustable leg bolts (24mm spanner). **We recommend positioning on a concrete base.**



- Before situating the machine, make sure that you have a suitable area to drain the machine when required.
 - The tank is fitted with a 2" draining tap to allow for the disposal of soiled water. 2" piping can be inserted into the tap for routing to a drain point.
- To fill the cleaner with **fresh water**, use a hosepipe and fill the tank using the side filler provided. **The water level should rise**, and be maintained, up to the Blue/White '**Water Level**' label on the filler spout (identified below).
- We do not recommend using chemical cleaning agents in the tank of the cleaner. Chemicals may affect the lacquer coating on golf balls and the water authorities may refuse permission to dispose of the water due to environmental reasons.
- These machines are mains powered and therefore need to be installed by **A QUALIFIED ELECTRICIAN** or competent responsible person. The mains lead must be safely routed to a supply with circuit breakers. Be especially careful to make sure that the lead cannot be damaged by any other equipment or processes that may share the same area.
- Whilst not strictly necessary, we recommend the use of ear defenders whilst the machine is in use.

Further advise on specific installations can be sought by contacting European Golf Machinery Ltd by email or phone:

info@rangeball.co.uk

Tel: +44 (0) 1473 277177



All current EGM golf ball cleaners are labelled with the below set of updated labels at the time of production.

If any of the labels are missing from your machine, then it is in the best interests of Health and Safety to **obtain new ones from EGM as soon as possible.**

WASH – EMPTY

Semi Auto models only

**IMPORTANT
KEEP LID CLOSED**

Semi Auto models only

**OVERLOAD
RESET**

Semi Auto models only



CLEANING DOOR

Remove door as necessary for debris removal
Do not tighten bolts beyond specified torque
Bolt tightening torque: 6ft-lb (8 Nm)

CHAIN DRIVE
--Adjustment not required--

Chain cover should be removed only
by qualified service personnel.

LUBRICATION POINT

Use recommended lubricant or an equivalent
Information on lubricants can be found in the
operator manual or by contacting EGM Ltd.

WATER LEVEL -- WATER LEVEL -- WATER LEVEL





Figure 1

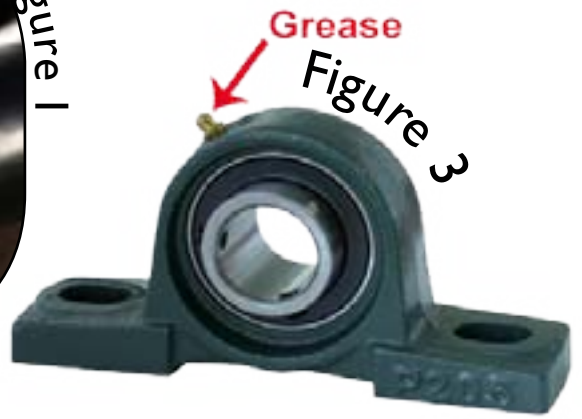


Figure 3



Figure 2

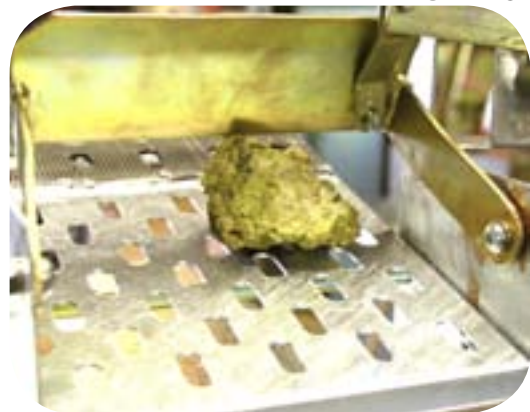


Figure 4



Figure 5



Figure 6

Manual washer operation

Filling

Make sure that the water level of the machine is up to the water level indicator (2-3" above the bottom of the internal washing drum).

Place a suitable container under the exit chute in preparation for emptying. (Manual machines only).

To start the wash process, press the **GREEN** start button (Fig. 6 P5).

Gradually load dirty golf balls into the entry chute. **DO NOT** overfill the machine beyond its stated capacity (Max. 800 balls for E800/ 2000 for E2000).

After around 30 seconds, move the release lever (Fig. 7 P8) to the down position by pulling out and pushing down. Empty a handful of golf balls and check the cleanliness.

If they are clean enough, then empty the machine of balls. If more cleaning is needed, then repeat the above steps until a suitable washing time for the current conditions is found.

As a guideline, wash times are often longer in winter due to more build up of foreign matter on golf balls.

Stop the machine using the **RED** button (Fig. 6 P5)

When necessary, drain and refill the water and clean out the tank of sediment (see maintenance page (by request only)).

Operation of Semi-Automatic machines

Follow the steps for filling the manual machines (Page 7).

Setting up washing and emptying cycles (Fig. 5 P5)

The timers fitted to the semi-auto washer provide for a timed wash and automatic dispenser filling cycle. Two adjustable timer functions are controlled by dials.

The left dial controls how long the ball washer retains the golf balls and washes them.

Rotating this dial in a clockwise direction increases the washing period, whilst turning it anticlockwise has the opposite effect. The 'Wash' dial ranges from 1-10 minutes, enabling you to set an optimum cycle time.

After the wash cycle has completed, the exit gate solenoid will open in conjunction with the elevator starting. The 'Empty' timer controls how long the system empties before turning off.

After the emptying cycle has been completed, the system shuts down.

We recommend that the emptying timer is set to 5 minutes initially.

This should give enough time to empty a full load of golf balls.

DO NOT attempt to alter the settings of any other dials on the timers other than the two blue dials. The timers are factory set and DO NOT require alteration.

Using the Semi-Auto system

To start the washing process press the **GREEN** button on the control box.

Under normal conditions, the washer will stop after the emptying process is finished. If you need to stop the machine during its cycle then the **RED** button can be used.

To reinitiate the cycle from the start, press the **GREEN** button again.

Exit gate jams (Fig. 4 P5)

The exit gate, as pictured, is operated by an electric solenoid.

It is possible on occasion that the exit gate may become blocked by a foreign object.

These may include stones and broken golf balls.

In the event of blockages, the solenoid is fitted with an emergency 'pop-out' switch that is located on the timer box.

After a blockage has been cleared, the switch must be depressed before normal functioning can be resumed.

ISOLATE FROM MAINS AND ELEVATOR BEFORE CLEARING BLOCKAGES



Manual emptying gate



Semi-Auto emptying gate

EGM ball washer Technical specifications

Note:All ball washer motors are protected by an overload in the Start/ Stop box.

Model:	E800/E2000
Max ball capacity	800 balls/ 2000 balls
Height:	1050/1050
Width:	800/800
Length:	1100/1845
Empty weight (kg):	120/200
Water capacity (L):	180/400
Electrical	
Voltage:	230Volts AC (1-Phase)
Gearbox/motor current	230v AC
Empty solenoid(Semi-Auto only):	230v AC
Starter/overload:	230v AC
Lubrication intervals	Bearings 2 months, drive chain monthly.

EGM Ball Washers comply with the following EC directives:

72/23 EEC of 19/2/1973 (Low Voltage Directive) and subsequent modifications.

89/336 EEC of 3/5/1989 (Electromagnetic Compatibility Directive) and subsequent modifications.